



Designer Finished Home

THE CHARLESTON

bungalow + loft

Lot #8 1715 sq ft



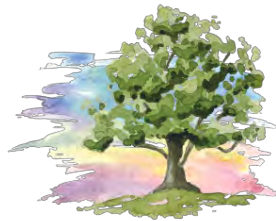
Designer Finished Home

THE CHARLESTON

bungalow + loft

Lot #8 1715 sq ft

Elegance and easy living are defined in this designer curated Land Ark home. Every element has been professionally selected to give a peaceful flow and feel to this home. With open areas, that are adjacent to bedrooms and loft spaces for hobbies or houseguests, this home has exterior and interior appeal. All finishings flow seamlessly from the front door to the back screened-in porch.



WATERCOLOUR
WESTPORT

New Homes New Life New Possibilities



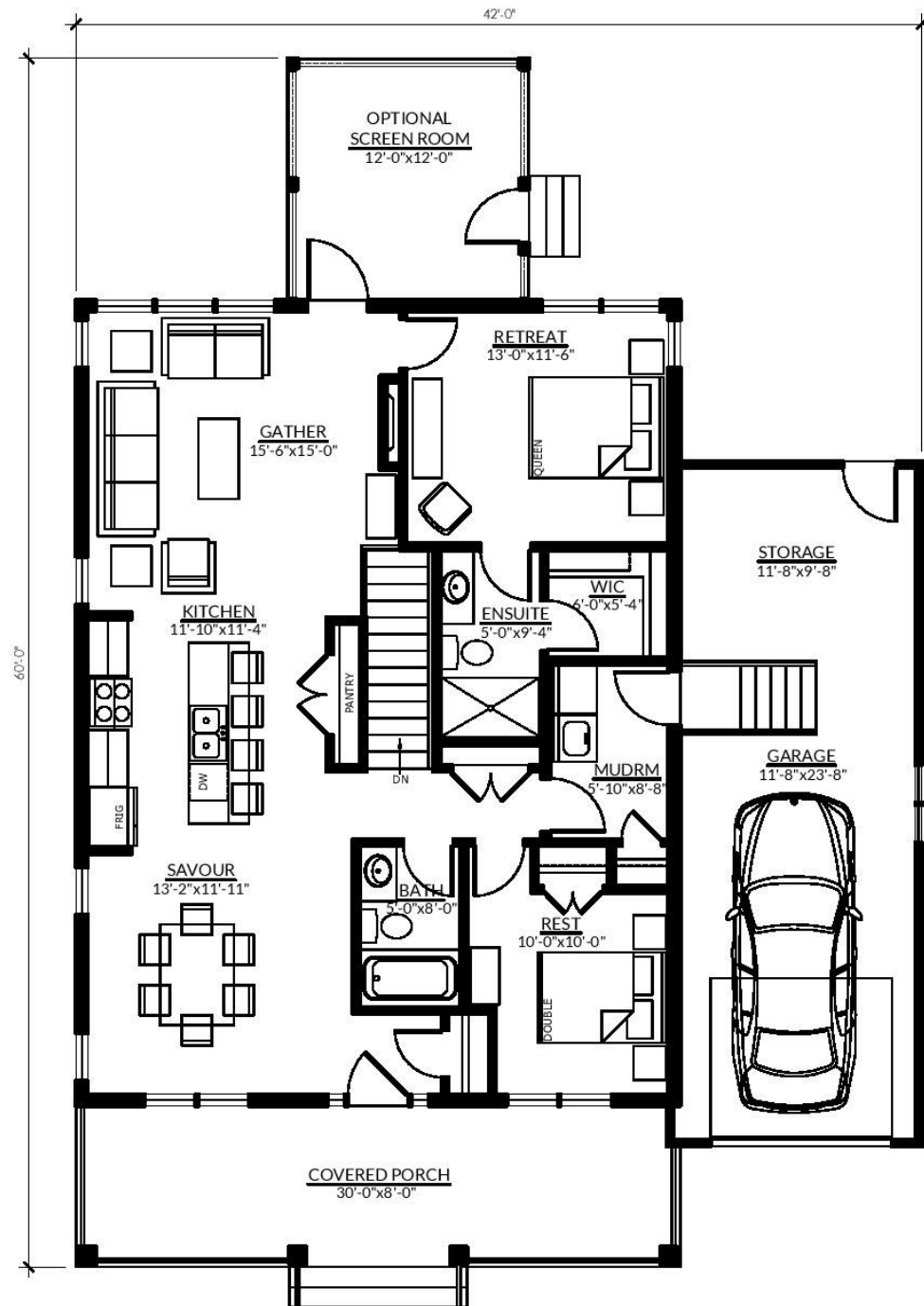
WATERCOLOUR
WESTPORT



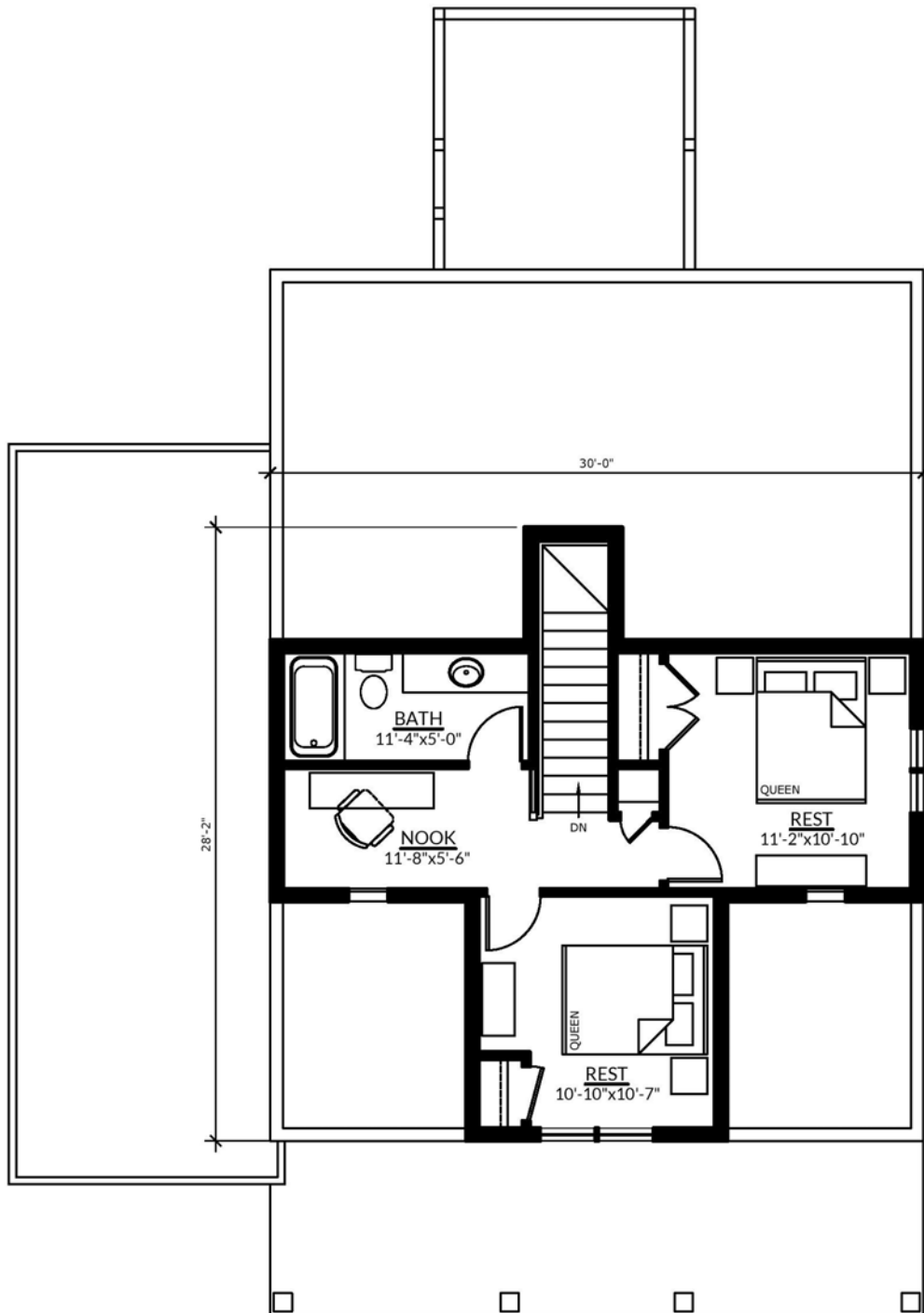
Designer Finished Home
THE CHARLESTON
bungalow + loft
Lot #8 1715 sq ft

All images on all pages are artist's concept and may vary slightly from the final product. Actual usable floorspace may vary from stated area and square footage has been calculated based on usable living space according to the TARION rules and does not include garage or unfinished basement areas. Images may show optional features which may not be included in the base price. Bulkheads & box outs may be required as chases for plumbing & mechanical. Garage main door location, if applicable, may vary subject to grade. Specifications subject to change without notice. Manufacturer's images are shown and may differ from the final product. E. & O.E. May 2021.

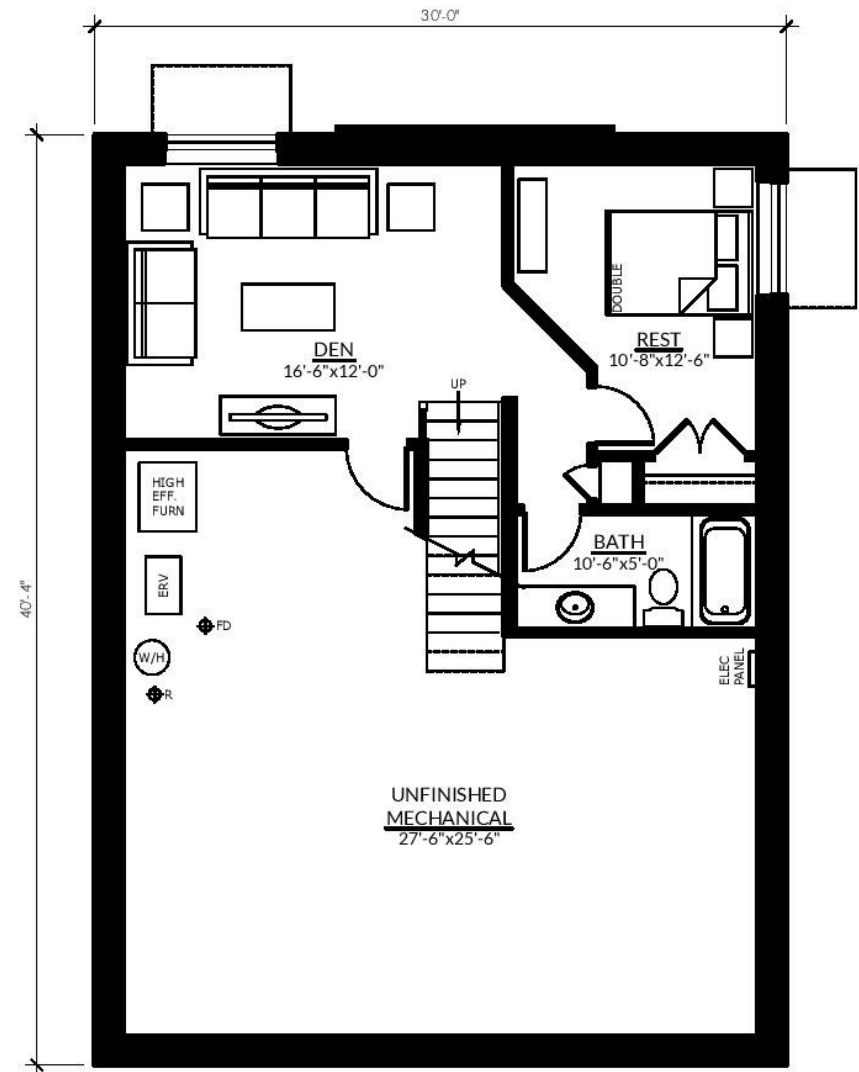
MAIN FLOOR - 1200 sq ft



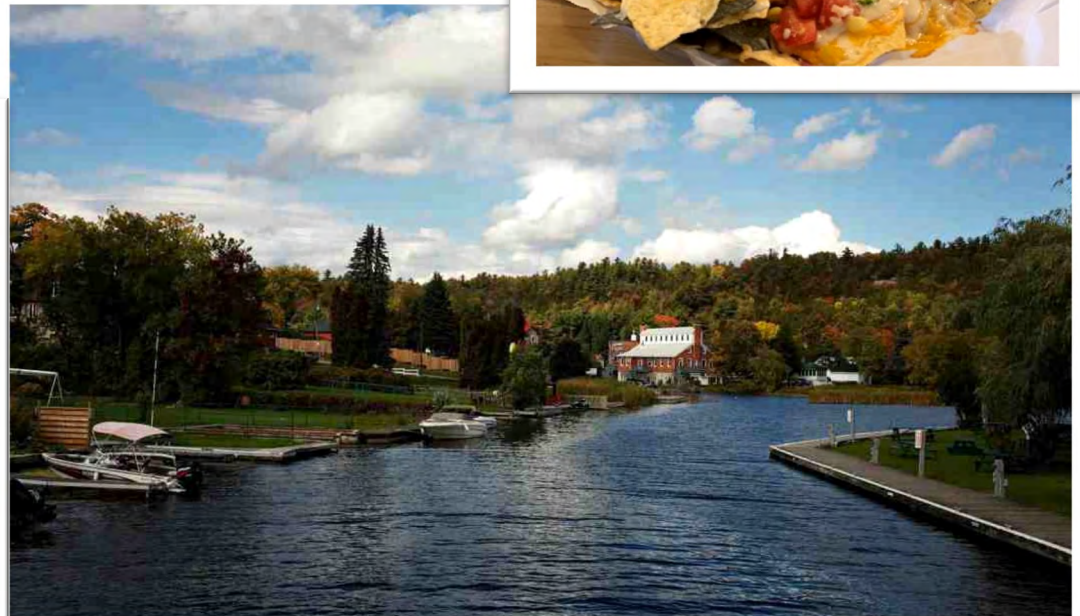
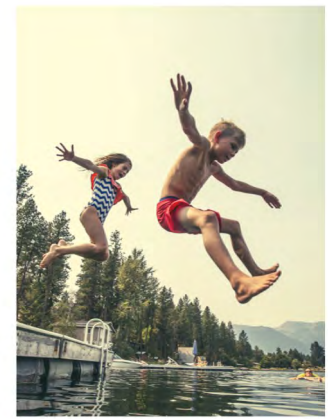
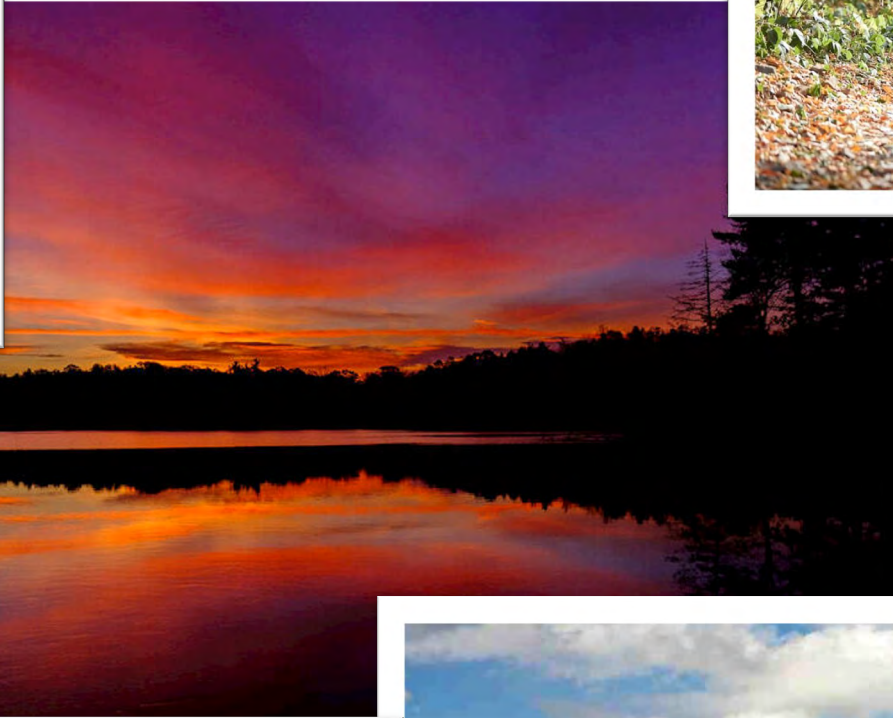
LOFT - 515 sq ft



FINISHED BASEMENT - 535 sq ft



WESTPORT VILLAGE ACTIVITIES FOR THE WHOLE FAMILY



WATERCOLOUR THE COMMUNITY

Escape dense urban living to a cottage style home in Watercolour Westport. With 32 lakes within a 15 mile radius, Westport is a water lover's paradise. Watercolour is only 0.7 km walk from the beach and balances nature and neighbourhood with perfection. A four season playground surrounds the area with activities and adventures for the whole family.

Unique in its plan, Watercolour has a traditional neighbourhood design featuring wider sidewalks, front verandas and 50ft wide lots for bungalows and bungalow+loft options. A walking trail along Harvest Creek, ponds with natural wildlife and views of Foley Mountain makes the neighbourhood a remarkable place.

Resource stewardship is being taken to a new level by Land Ark homes as every home being constructed is Net Zero Ready. These homes will be exceptional in their comfort, efficiency with lower utility bills and more responsible for their carbon footprint legacy. Even our interior paint absorbs CO2. Choosing exceptional standards and creating a community so you can experience new life and new possibilities is what makes Watercolour by Land Ark truly remarkable.

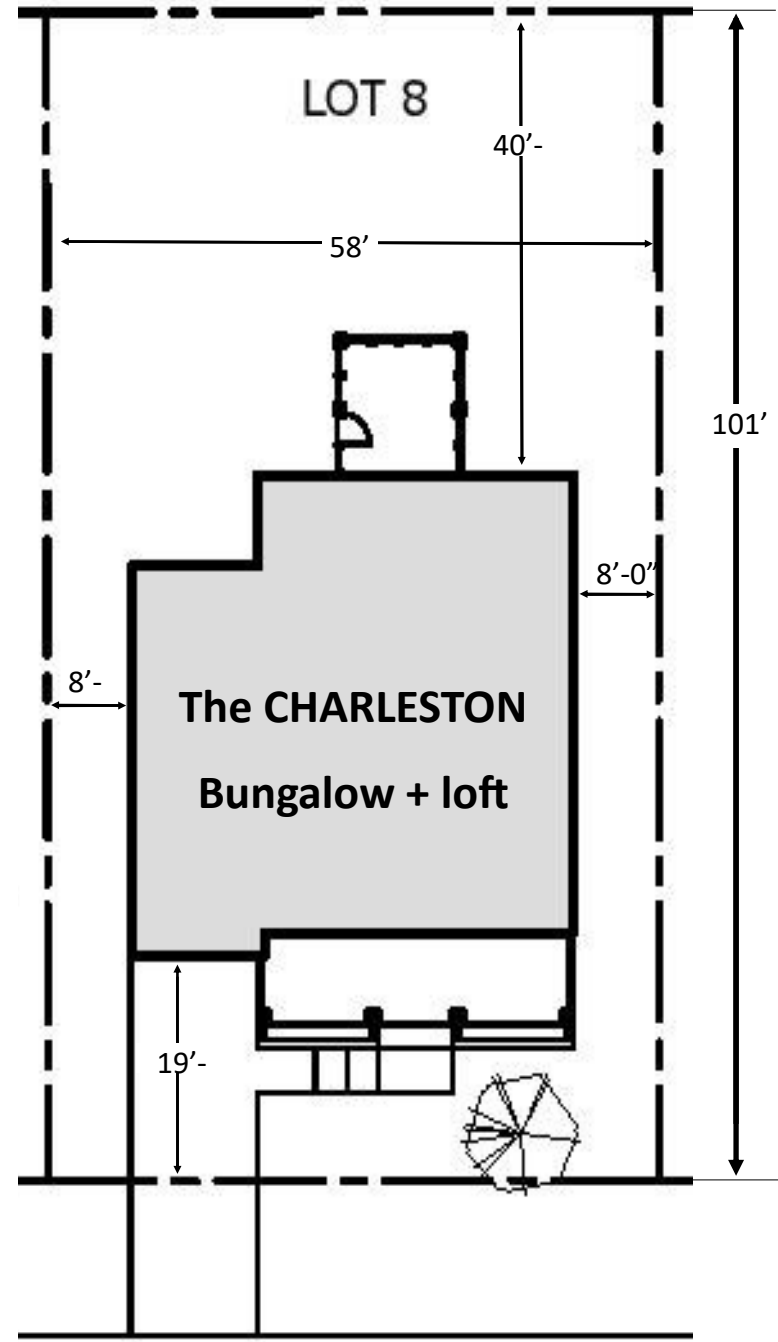


Lot #8

SITE PLAN



All images are artist's concept and may vary slightly from the final product. Actual usable floor-space may vary from stated area and square footage has been calculated based on usable living space according to the TARIION rules and does not include garage or unfinished basement areas. Drawings may show optional features which may not be included in the base price. Bulkheads & box outs may be required as chases for plumbing & mechanical. Garage main door location, if applicable, may vary subject to grade. Specifications subject to change without notice. Manufacturer's images are shown and may differ from the final product. E. & O.E. May 2021.



SHELTER COVE DRIVE

Architecturally **BEAUTIFUL & INVITING**

EXTERIOR

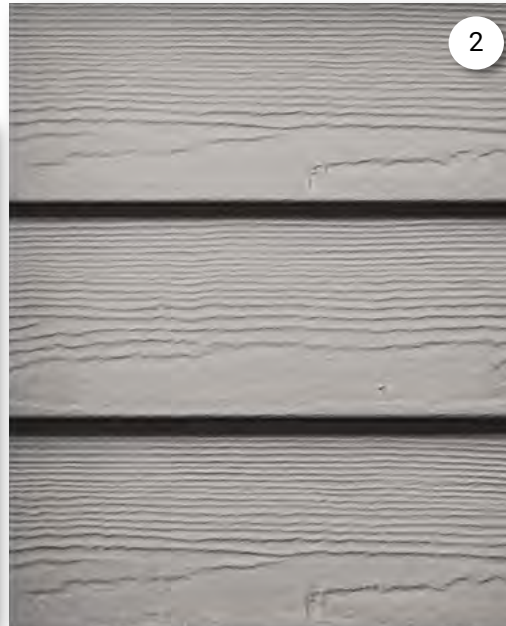
1. SHINGLES

Owens Corning
Onyx Black



2. SIDING

James Hardie
Pearl Grey



3. TRIM

James Hardie
Arctic White



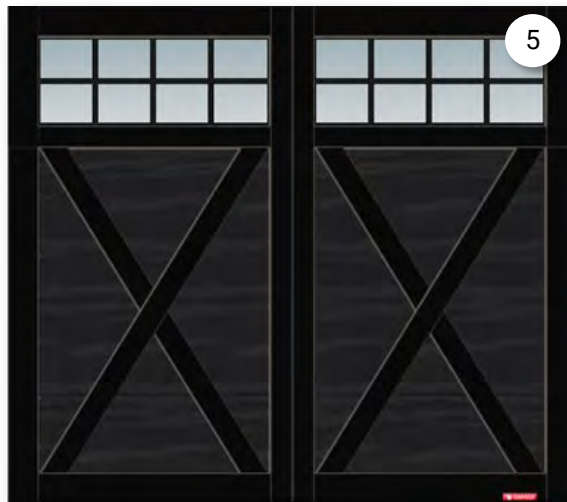
4. ACCENT SHAKES

James Hardie
Pearl Grey



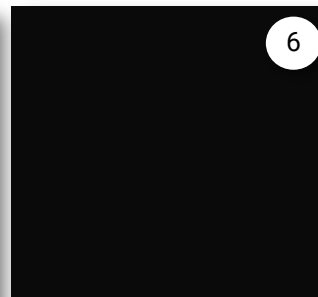
5. GARAGE DOOR

Garaga
Black Satin



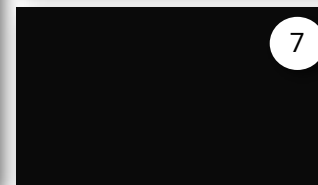
6. WINDOWS

Jeld-Wen
black



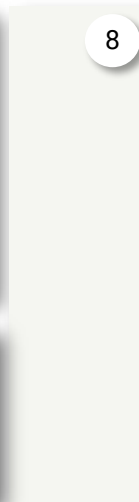
7. SOFFIT/FACIA

Black



8. POSTS

Chantilly Lace



9. FRONT DOOR

Black Satin



10. DOOR HARDWARE

Weiser - Halifax
Black



Make a grand entrance with **DESIGNER CURATED ELEMENTS**

INTERIOR

1. DOORS

Masonite - Lincoln Park
White

2. FOYER FLOOR TILE

Midgley West - Marmette
Black

3. CARPET

Beaulieu-

4. DOOR HANDLES

Weiser - Halifax square rose
Matte Black

5. CEILING & WALL COLOUR

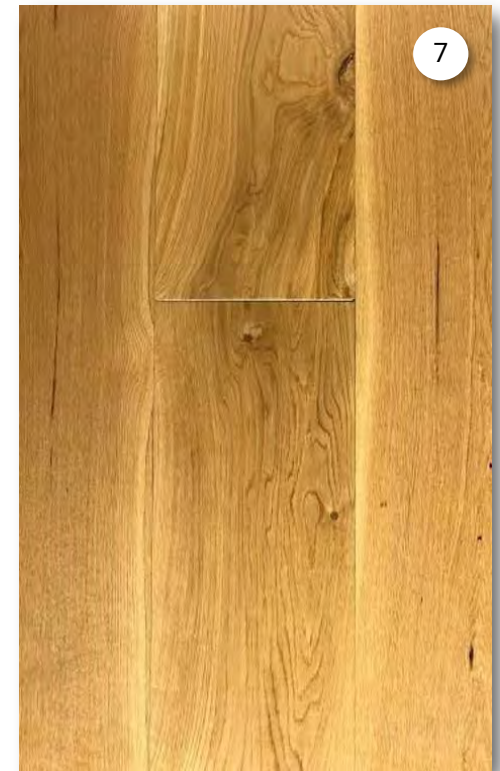
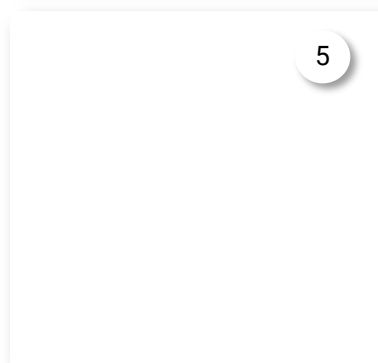
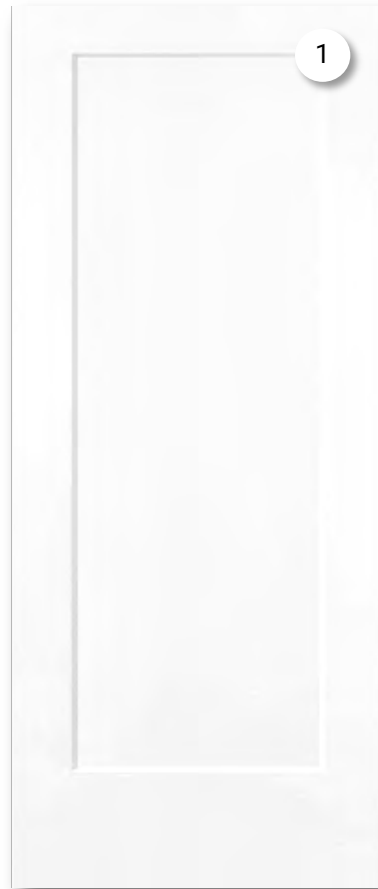
Graphenstone
White

6. TRIM

White 5" baseboards
White 3" window trim

7. HARDWOOD FLOOR

Gaylord Hardwood Flooring
White Oak - Natural



A place to gather in **WARMTH & BEAUTY**

FIREPLACE

1. MANTLE

Recovered barnwood from
Rice Farm

2. FIREPLACE

Dimplex Ignite Electric 50"
with Driftwood and Rock
accessory package



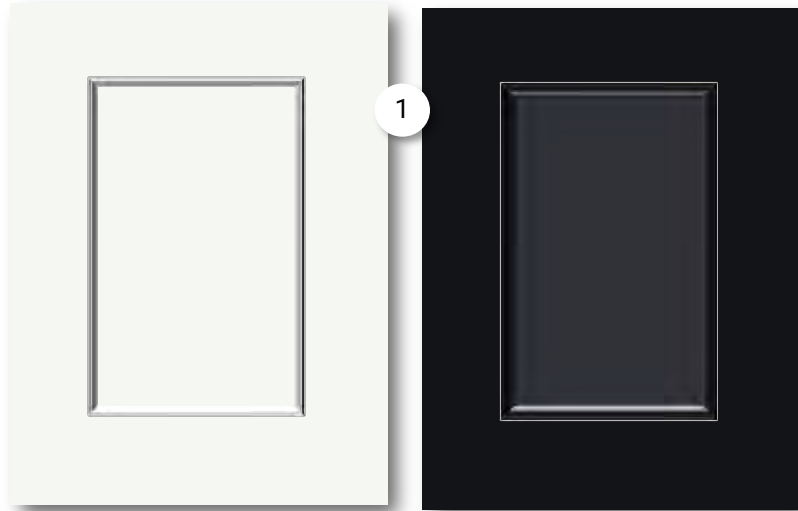
All images on all pages are artist's concept and may vary slightly from the final product. Actual usable floorspace may vary from stated area and square footage has been calculated based on usable living space according to the TARION rules and does not include garage or unfinished basement areas. Images may show optional features which may not be included in the base price. Bulkheads & box outs may be required as chases for plumbing & mechanical. Garage main door location, if applicable, may vary subject to grade. Specifications subject to change without notice. Manufacturer's images are shown and may differ from the final product. E. & O.E. May 2021.

A great recipe starts with a **WELL APPOINTED KITCHEN**

KITCHEN

1. CABINETS

Lauryzen - Minnesota
Chantilly Lace &
Ebony



.2 RANGE HOOD

Cyclone
Stainless steel



3. BACKSPLASH

Midgley West - Imperial
Statuario polished
24"x 48"



5. DOUBLE SINK

Urban Quarry
Stainless Steel



6. FAUCET

Kalia - Black



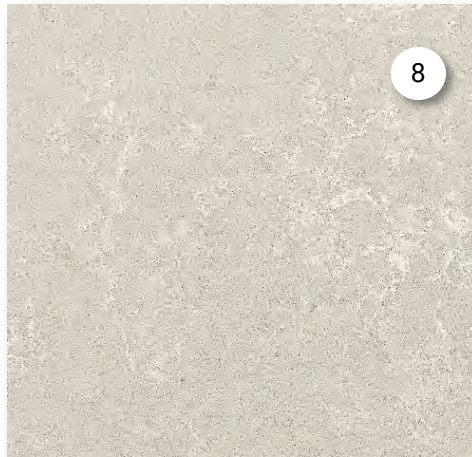
7. CABINET PULLS

Richelieu - black



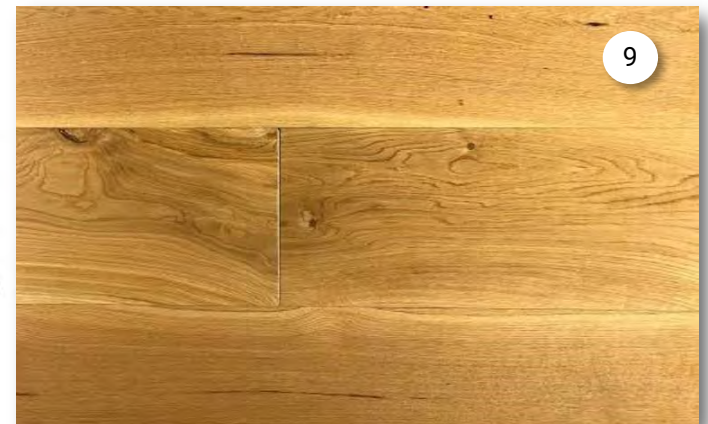
8. COUNTERTOP

Quartz handstone
Awaken



9. HARDWOOD FLOOR

Gaylord Hardwood Flooring
White Oak - Natural



A retreat to pamper yourself in **SPA-LIKE ELEGANCE**

ENSUITE BATHROOM

1. SHOWER FIXTURE

Kalia - black

2. SHOWER DOORS

Kalia - black

3. SHOWER WALL TILE

Midgley West Imperial
Calacatta Bianco
12"X 48" vertical

4. WALL COLOUR

Graphenstone
White

5. SINK FAUCET

Delta - black

6. SINK

Urban Quarry - undermount
White

7. TOILET

American Standard
White

8. CABINET PULLS

Rocheleau - black

9. CABINETS

Laurysen - Minnesota
Ebony

10. SHOWER FLOOR TILE

Midgley West - Imperial
Calacatta Bianco
Esagona

11. COUNTERTOP

Quartz Handstone
Awaken

12. BATHROOM FLOOR TILE

Midgley West - Imperial
Calacatta Bianco
12" X 48"



A beautiful blend of **MODERN & LUXURY**

MAIN BATHROOM

1. **SINK FAUCET**

Delta - black

2. **WALL COLOUR**

Graphenstone

White

3. **SINK**

Urban Quarry - undermount

White

4. **WALL TILE**

Olympia

4" X 16"

Arctic White

5. **CABINETS**

Laurysen - Minnesota

Ebony

6. **COUNTERTOP**

Quartz Handstone

Awaken

7. **TOILET**

American Standard

White

8. **CABINET PULLS**

Rocheleau - black

9. **FLOORING**

Midgley West - Marmette

9"X9" Decoro Black

10. **SHOWER/TUB FAUCETS**

Delta - Black

11. **TUB**

Neptune - Juna

white

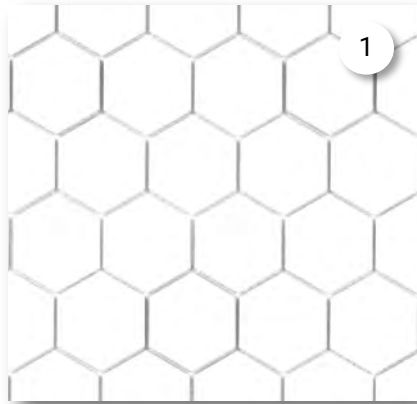


A place where **FUNCTION MEETS ELEGANCE**

LOFT BATHROOM

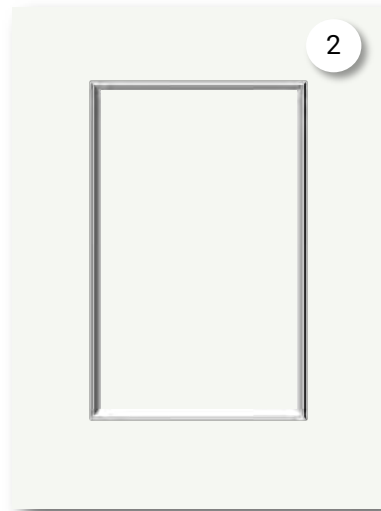
1. WALL TILE

Sarana Hex
White



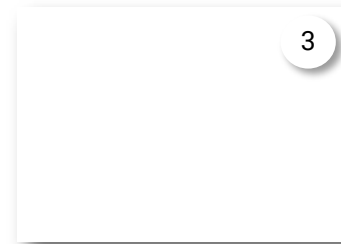
2. CABINETS

Laurysen - Minnesota
Chantily Lace



3. WALL COLOUR

Graphenstone
White



4. FAUCET

Delta - black



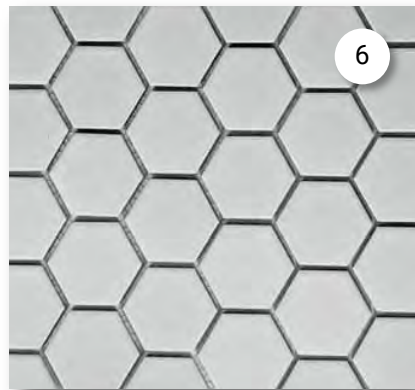
5. SINK

American Standard
White



6. FLOOR

Sarana Hex
grey



7. COUNTERTOP

Wilsonart
White Cascade



8. CABINET PULLS

Rocheleau - black



9. SHOWER/TUB FAUCETS

Delta - black



10. TUB

Neptune Juna



11. TOILET

American Standard
White



A place where **FUNCTION MEETS ELEGANCE**

BASEMENT BATHROOM

1. CABINET PULLS

Rocheleau - black

2. CABINETS

Laurysen - Minnesota
Ebony

3. SINK

American Standard
white

4. FAUCET

Delta - black

5. COUNTERTOP

Wilsonart
White Cascade

6. WALL COLOUR

Graphenstone
White

7. FLOORING

Midgley West - Denver Stone
12" X24" Grey

8. WALL TILE

Midgley West - mono
9"X9" bianco

9. SHOWER/TUB FAUCETS

Delta - black

10. TUB

Neptune Juna

11. TOILET

American Standard
White





WATERCOLOUR
WESTPORT

New Homes New Life New Possibilities

WatercolourWestport.com

Email: info@watercolourwestport.com

All images on all pages are artist's concept and may vary slightly from the final product. Actual usable floorspace may vary from stated area and square footage has been calculated based on usable living space according to the TARION rules and does not include garage or unfinished basement areas. Images may show optional features which may not be included in the base price. Bulkheads & box outs may be required as chases for plumbing & mechanical. Garage main door location, if applicable, may vary subject to grade. Specifications subject to change without notice. Manufacturer's images are shown and may differ from the final product. E. & O.E. May 2021.